

Situated in the prominent Bole district in Addis Ababa, a new landmark is taking shape—the Advanced Multispecialty Hospital by Roha Health. This state-of-the-art facility is poised to be Ethiopia’s first Green Hospital Building, offering exceptional healthcare services while championing sustainability. The hospital, currently under construction, has just achieved preliminary EDGE certification, the first recognition for a healthcare facility in Ethiopia. We sat down with Yenework Tsegaye, the mechanical project manager overseeing the development of the Roha Medical Campus, to discuss the innovative, eco-friendly strategies being implemented throughout the construction process.

WHAT MAKES A BUILDING GREEN?

A green building goes beyond aesthetics; it’s about creating structures that are efficient and sustainable. This means using resources wisely, minimizing waste, and ensuring that the building has minimal environmental impact throughout its lifecycle.



WHAT IS EDGE CERTIFICATION?

EDGE, which stands for Excellence in Design for Greater Efficiencies, is a green building certification program that focuses on resource efficiency. Achieving EDGE certification is a rigorous process in which the building’s design and construction processes are assessed according to three major sustainability criteria: energy, water and embodied energy of materials.

We started the certification process with a detailed analysis on EDGE software, which helped us identify potential areas for improvement. After implementing the necessary changes suggested by the software, we underwent a third-party verification to ensure compliance with EDGE standards.



WHAT ENVIRONMENTALLY-CONSCIOUS FEATURES CONTRIBUTED TO RMC'S ELIGIBILITY FOR EDGE CERTIFICATION?

Roha Medical Campus was envisioned with a strong commitment to sustainability, incorporating numerous innovative environmental and building features that minimize its ecological footprint. A key element of the campus is the Thermally Activated Building system (TABS), which enhances thermal comfort while significantly reducing energy consumption by leveraging the building's superstructure as a thermal reservoir. Chilled water is circulated through pipes embedded in the concrete slabs effectively enhancing climate control and energy efficiency, ensuring a comfortable indoor environment while minimizing energy consumption. We are very proud to be the first company to implement this system on such a large scale in Ethiopia.



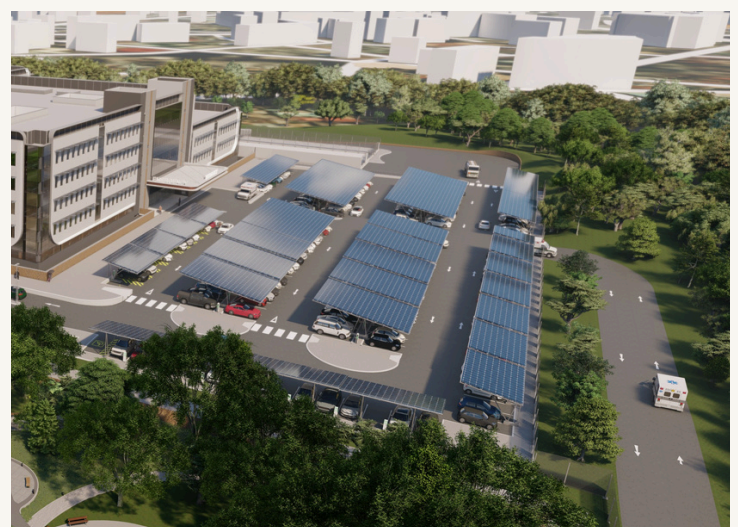
In line with promoting a culture of sustainability, we have implemented comprehensive waste management strategies. Our compact sewage treatment plant is designed to prevent leakage, thereby safeguarding the environment. Additionally, we utilize low-emission solutions for managing hospital waste, which underscores our commitment to responsible resource use.

Furthermore, the Roha Medical Campus has established a 12,000-tree Miyawaki forest, which not only enhances biodiversity but also serves as a natural carbon sink, contributing to the overall ecological health of the area.



Additionally, the campus will feature a robust 1MW solar panel installation with battery energy storage to meet its power needs and reduce reliance on the grid. Water conservation measures are also an integral component of the design, featuring low-flow taps and showers, as well as dual-flush toilets.

The building is designed to maximize natural light, enhancing the overall ambiance while reducing reliance on artificial lighting. To further promote energy efficiency, it will incorporate zoned and occupancy sensor lighting systems that automatically adjust based on usage and occupancy levels. Additionally, energy-efficient light fixtures will be utilized throughout the facility, significantly lowering electricity consumption and contributing to a more sustainable environment.



WHAT IS THE IMPACT OF RMC'S EDGE CERTIFICATION ON SUSTAINABLE BUILDING PRACTICES AND ENVIRONMENTAL CONSERVATION?

The impact of achieving EDGE certification for the Advanced Multispecialty Hospital extends beyond just recognition. This certification not only affirms Roha Health's dedication to minimizing our ecological footprint while delivering quality medical services, but also leads to substantial cost savings through reduced energy and water consumption.

Moreover, our achievement sets a vital benchmark for future construction projects in Ethiopia, demonstrating that it is entirely possible to harmonize respect for the natural environment with high standards of construction quality. We envision our work as a catalyst for change, inspiring other developers, architects, and stakeholders in the region to adopt and prioritize sustainable practices.

Our hope is that this initiative will resonate not just within Ethiopia but across Africa, encouraging a broader movement towards green building. We believe Green buildings are not only feasible and beneficial to the community, but they pave the way for a more sustainable future in Africa.



379 Cape Verde Street, A4 Building, 6th Floor,
Addis Ababa

+251 1163 93 910

info@rohamedicalcampus.com

